



## TANK T 400 M3

# TANK T 400M3 Owner's Manual





## TANK T 400 M3

### 1. Description

Tank T 400 M3 is a 400 BBL ( 16,800 gallons) mixing tank.  
It includes the following equipment

- One (1) tank painted dark blue as general drawing 07/25/2012
- Four (4) mixers Max 2000 type M2A-10 with 2 paddles
- One (1) level transmitter Vegason 63
- One (1) EXP electric box with sight windows
- One (1) EXP breaker box with breaker 60 Amps
- One (1) SOOW electric cord type W size 6/4 length 150'

#### Electric box

The electric box includes all the components to operate the mixers and read the level in the tank.

- 4 Start/stop push buttons
- 4 lights "Green"
- 4 contactor with overload for 10 HP motor
- 1 Transformer 460V//120 V
- 1 Readout
- 1 Horn (Alarm)

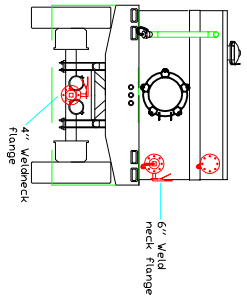




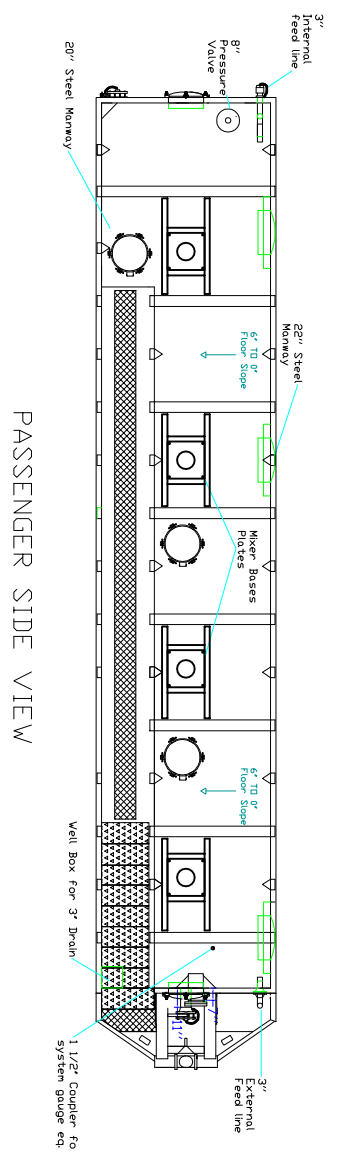


# 17800 GALS. 423 Bbl's CLOSED TOP MIXER TANK

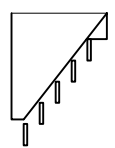
REAR VIEW



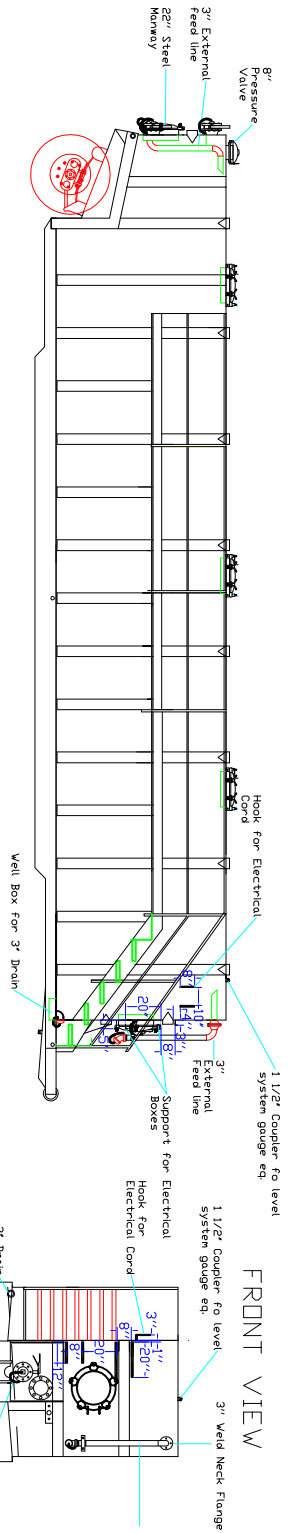
TOP VIEW



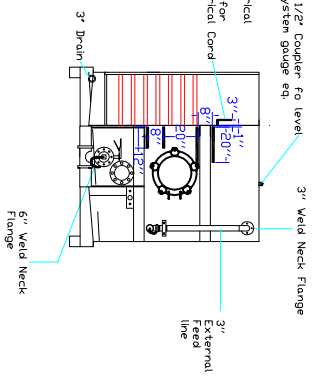
STAIRWAY VIEW



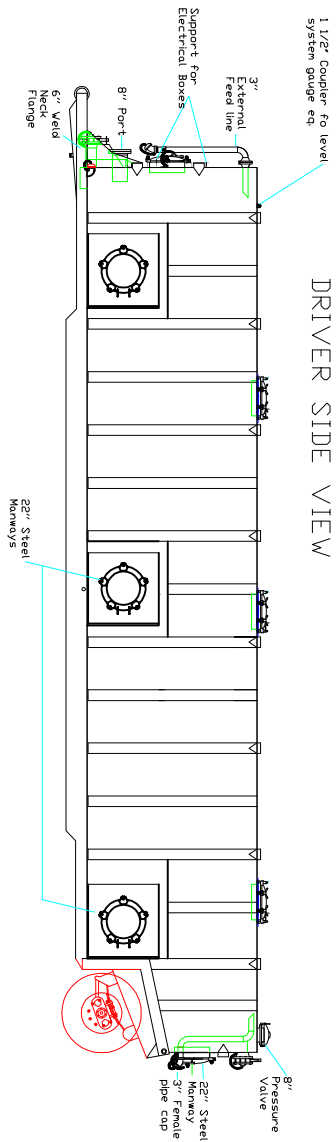
PASSENGER SIDE VIEW



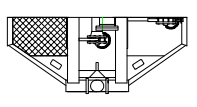
FRONT VIEW



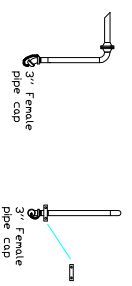
DRIVER SIDE VIEW



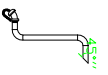
FRONT



3" EXTERNAL FEED LINE



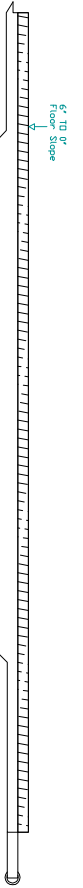
3" INTERNAL FEED LINE



**STANDARD SPECIFICATIONS**

CAPACITY - 17800 Gal.  
 LENGTH - 496 1/2" Tank Length/ 548 1/2" Overall Length  
 HEIGHT - 96" Tank Height/ 108" Overall Height  
 FLOOR - 444" x 56" x 1/4" Plate A26 Floor  
 FLOOR CROSSMEMBERS - 1/4" A36 PLATE  
 SIZES - 1/4" Plate A36 / 6" x 3 1/2" x 1/4" Formed Side Stakes  
 FRONT - 1/4" Plate A36 / (2) - 1/4" Formed Horizontal Supports  
 (1) - 6" Threaded Flange \ 6" Male Plug \ 6" Butterfly Valve  
 (2) - External Feed Line - 3" Sch40 Pipe (located passenger side)  
 REAR - 1/4" Plate A36 / (2) - 1/4" Formed Horizontal Supports  
 (1) - 4" Port  
 (2) - 6" Threaded Flange \ 6" Male Plug \ 6" Butterfly Valve  
 (3) - 6" Threaded Flange \ 6" Male Plug  
 (4) - 6" Threaded Port - 6" Weld Neck Flange \ 6" Blind Flange  
 (5) - Internal Feed Line - 3" Sch40 Pipe (located driver side)  
 SUSPENSION - 3 LEAF SPRING, 22500 LBS. CAPACITY  
 AXLES - 715" TRACK, 22500 LBS. CAPACITY  
 TIRES - 11R22.5 12 PLYS  
 WHEELS - 825 X 225 STEEL  
 BLAST - INTERIOR SURFACE PREPARATION - SSPC-SP-10 Near-White Metal Blast  
 INTERIOR SURFACE PREPARATION - SSPC-SP-6 Commercial Blast Cleaning  
 PAINT - INTERIOR EPOXY-PRIMED 100% SOLID 200 MILS D.F.T.  
 (EXTENDED) Fresh Coat Powderstone 30 - 40 MILS D.F.T.  
 HYDRO-TESTED

FLOOR

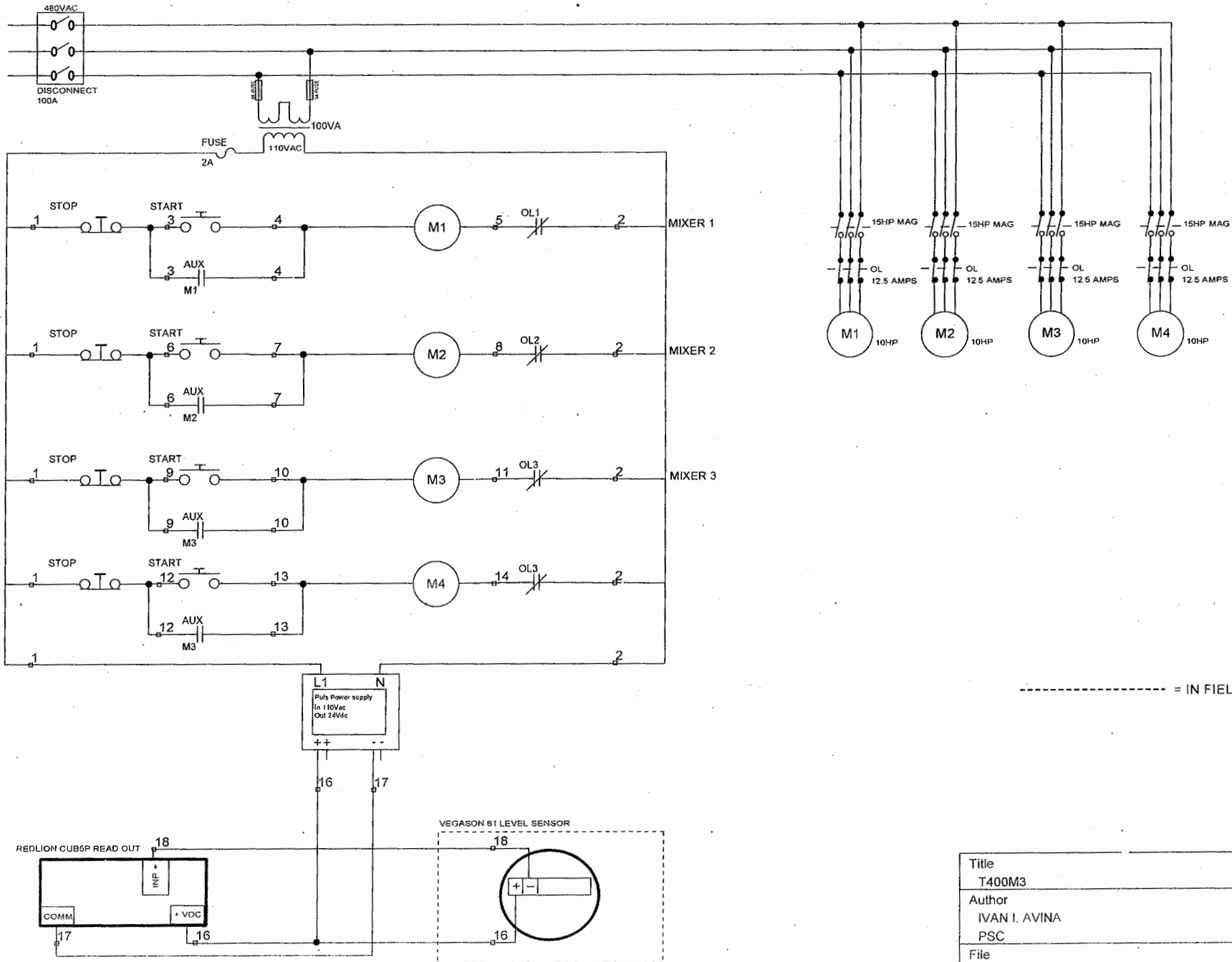


**ER MANUFACTURING INC.**  
 Alameda st. 2222  
 North Compton Ca. Address

Notes:  
 1-Do not scale print.  
 2-Destroy all previous revision.  
 3-All drawing changes are to be made on CAD system.

Description- Closed Top Mixer standard specifications for tanks.  
 This drawing and all information thereon is the property of ER MANUFACTURING Inc. It is loaned confidential and must not be used in any way that is detrimental to our interests.

Dwr. VME	Scale. No scale	Date. 07/25/2012	General Drawing
Rev.			
Appr. Arturo Garcia F.			



Title T400M3		
Author IVAN I. AVINA		
PSC		
File rs\del\l\Desktop\IVAN\SCHEMATICS\T400M3.dsn	Document	
Revision 2.0	Date 12/27/13	Sheets 1 of 1